



# FACT SHEET



LE TAHITI

By Pearl Resorts

# Le Tahiti by Pearl Resorts, the generous one

Located on the North East Coast of the Island of Tahiti, Le Tahiti by Pearl Resorts is ideally positioned away from the hustle and bustle of Papeete Town Centre and harbour (about 7km, or 10 minutes by car), and a little further from Tahiti Faa'a international airport.

Spread over 4 hectares of exotic tropical gardens facing 900 meters of the finest black sand volcanic beach sits this destination resort.

The Matavai Bay, famous for its historical site and recognized as the cradle of the royal Tahitian family where celebrated navigators anchored once upon a time ... And today, visitors can dream to create their own personal experience ...

Welcome... that is how you will feel when you arrive at Le Tahiti by Pearl Resorts.





Check in 02:00pm  
Check out 11:00am



## SERVICES

- Complimentary Wi-Fi throughout the resort and in all units
- Activities and Concierge Desk
- Printer & computer photo copying service, Fax
- Laundry service
- 24-hour reception and room service
- Currency exchange
- Free shuttle transfers between the resort and Papeete
- Car rental
- Safe at the reception
- Wake-up call

## FACILITIES

- 1 restaurant
- 1 bar
- Local arts & crafts market
- Air-conditioned fitness center
- Open air swimming pool
- Jet pool
- Tāvai Spa featuring double and single massage rooms, sauna & steam room
- Conference and meeting rooms
- Parking
- Direct access to a black sandy beach

## LOISIRS GRATUITS

- 2 daily cultural activities (full program disclosed at the front desk)
- 24/7 Fitness access
- 4 Yoga classes at 05:30 pm each week (possibility to book a private class)

## Bay Bar

Bay Bar is the ideal place to enjoy a cocktail and enjoy a breathtaking view of the ocean and a sunset you will never forget!

Open every day from 10:00am to 09:30pm

Do not miss our Happy Hour on selected cocktails, every day, from 05:00pm to 6:00pm!



## Restaurant Hiti Mahana

Overlooking the Matavai Bay, the “Hiti Mahana” (The Rising Sun) restaurant offers great “al fresco” dining for breakfast, lunch and dinner.

Under the direction of our Executive Chef, the Hiti Mahana offers a mix of local Tahitian, South East Asian and international Mediterranean cuisine.

Thursday evenings feature a lively traditional Marquesan dance show. Friday evenings feature an award-winning Tahitian dance show. On Thursday and Friday nights, guests can order à la carte while enjoying the show.

Breakfast from 06:30am to 09:30am

Sunday Brunch from 06:30am to 10:00am

Lunch from 11:30am to 02:00pm

Dinner from 06:00pm to 09:30pm

Room service menu available



## TĀVAI SPA

The TĀVAI Spa, locally award-winning well-being and fitness centre, is tailored to revitalize and rejuvenate any tired or aching body.

In the cool and elegant surrounds of TĀVAI Spa, discover “monoi” beauty oil while receiving a massage, mineralize yourself with our signature volcanic black sand body scrub, enjoy the benefit of a fresh papaya pulp facial or simply energize with pumping cardio and fitness activities.

Discover also TĀVAI Spa ephemeral duo treatments inspired by traditional beauty secret and share a unique exotic and relaxing moment during two hours. These treatment change regularly.

Contact the Tavai Spa directly at [tavai.spa@letahiti.com](mailto:tavai.spa@letahiti.com)

Open from 10:00am to 06:00pm from Monday to Friday; from 09:00 am to 06:00pm on Saturday and from 10:00am to 05:00 pm on Sunday.

# Pampering



TĀVAI SPA  
By Pearl Resorts

# ROOMS & SUITES

ALL OUR ROOMS AND SUITES OFFER AN OCEAN VIEW

HOT TUB AND PREMIUM LOCATION (HIGH FLOORS) AVAILABLE





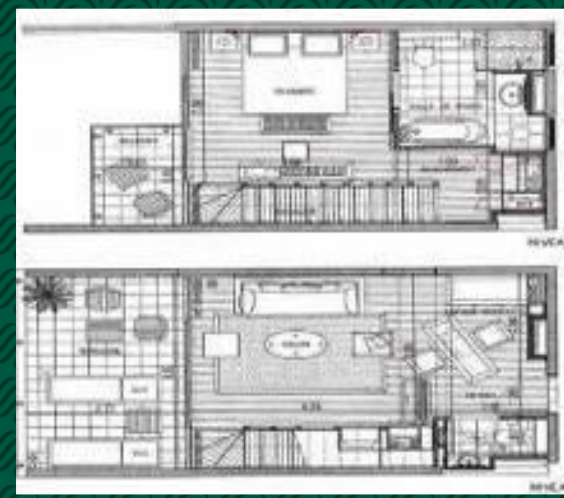
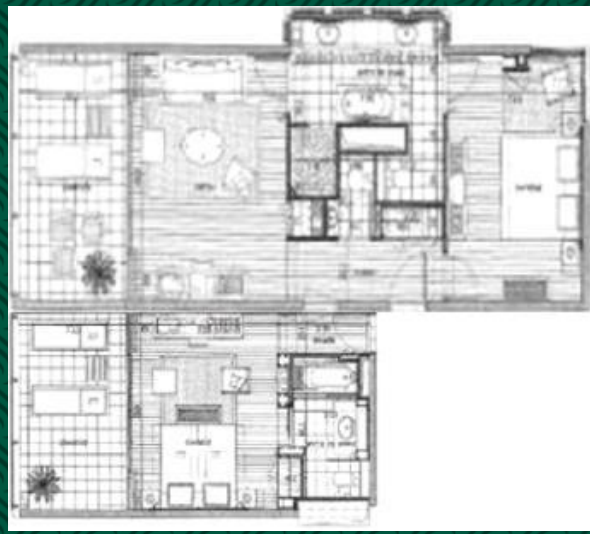
Ocean View Room	Ocean View Room with Hot Tub	Ocean View Suite
43 sq. meters – 463 sq. ft	43 sq. meters – 463 sq. ft	73 sq. meters – 786 sq. ft
Large covered balcony with furniture	Large covered balcony with Private hot tub	Large covered balcony with furniture
Controlled Air-Conditioning	Controlled Air-Conditioning	Controlled Air-Conditioning
In room safe and mini fridge	In room safe and mini fridge	In room safe and mini fridge
Color TV, telephone and radio	Color TV, telephone and radio	Color TV, telephone and radio
Coffee and tea making facilities	Coffee and tea making facilities	Coffee and tea making facilities
Hair dryer + 110 & 220 volts	Hair dryer + 110 & 220 volts	Hair dryer + 110 & 220 volts
Free Wi-Fi internet access	Free Wi-Fi internet access	Free Wi-Fi internet access
Daily housekeeping service	Daily housekeeping service	Daily housekeeping service
Bath with shower combined	Bath with shower combined / also hot tub	Shower & Bath, 2 wash basins
Iron & ironing board are available by calling housekeeping	Iron & ironing board are available by calling housekeeping	Iron & ironing board



Premium Ocean View Room	Premium Ocean View Room with hot tub	Premium Ocean View Suite
43 sq. meters – 463 sq. ft	43 sq. meters – 463 sq. ft	73 sq. meters – 786 sq. ft
Large covered balcony with furniture	Large covered balcony with Private hot tub	Large covered balcony with furniture
Controlled Air-Conditioning	Controlled Air-Conditioning	Controlled Air-Conditioning
In room safe and mini fridge	In room safe and mini fridge	In room safe and mini fridge
Color TV, telephone and radio	Color TV, telephone and radio	Color TV, telephone and radio
Tea making facilities & Nespresso coffee machine	Tea making facilities & Nespresso coffee machine	Tea making facilities & Nespresso coffee machine
Hair dryer + 110 & 220 volts	Hair dryer + 110 & 220 volts	Hair dryer + 110 & 220 volts
Free Wi-Fi internet access	Free Wi-Fi internet access	Free Wi-Fi internet access
Daily housekeeping service	Daily housekeeping service	Daily housekeeping service
Bath with shower combined with experience shower system with essential oils	Bath with shower combined with experience shower system with essential oils / also hot tub	Shower combined with experience shower system with essential oils & Bath, 2 wash basins
Iron & ironing board are available by calling housekeeping	Iron & ironing board are available by calling housekeeping	Iron & ironing board



Premium Ocean View 2- Bedroom Suite	Premium Ocean View Duplex
116 sq. meters – 1 249 sq. ft	73 sq. meters – 786 sq. ft
Large covered balcony with furniture	Large covered balcony with furniture
Controlled Air-Conditioning	Controlled Air-Conditioning
In room safe and mini fridge	In room safe and mini fridge
Color TV, telephone and radio	Color TV, telephone and radio
Tea making facilities & Nespresso coffee machine	Tea making facilities & Nespresso coffee machine
Hair dryer + 110 & 220 volts	Hair dryer + 110 & 220 volts
Free Wi-Fi internet access	Free Wi-Fi internet access
Daily housekeeping service	Daily housekeeping service
Bath with shower combined with experience shower system with essential oils	Shower combined with experience shower system with essential oils & Bath, 2 wash basins
Iron & ironing board are available by calling housekeeping	Iron & ironing board
Turn down service	Turn down service



# BEDDING CONFIGURATION AND MAXIMUM CAPACITY

Room Type	Rooms	Maximum Occupancy	Bed Configuration
OCEAN VIEW ROOM 43 m <sup>2</sup> – 463 sq. ft	11	2 AD + 1 BB	1 King or 2 Twin + Crib
OCEAN VIEW ROOM with hot tub 43 m <sup>2</sup> – 463 sq. ft	12	2 AD + 1 BB	1 King or 2 Twin + Crib
OCEAN VIEW SUITE 73 m <sup>2</sup> – 786 sq. ft	10	2 AD + 2 CHD + 1 BB 2 AD + 2 CHD 4 AD + 1 BB	1 King or 2 DBL + Sofa Bed + Crib 1 King + Sofa Bed + 1 rollaway 1 King + Sofa Bed + Crib
PREMIUM OCEAN VIEW ROOM 43 m <sup>2</sup> – 463 sq. ft	5	2 AD + 1 BB	1 King or 2 Twin + Crib
PREMIUM OCEAN VIEW ROOM with hot tub 43 m <sup>2</sup> – 463 sq. ft	6	2 AD + 1 BB	1 King or 2 Twin + Crib
PREMIUM OCEAN VIEW SUITE 73 m <sup>2</sup> – 786 sq. ft	8	2 AD + 2 CHD + 1 BB 2 AD + 2 CHD 4 AD + 1 BB	1 King or 2 Twin + Sofa Bed + Crib 1 King or 2 Twin + Sofa Bed + 1 rollaway 1 King or 2 Twin + Sofa Bed + Crib
PREMIUM OCEAN VIEW 2- BEDROOMS SUITE 116 m <sup>2</sup> – 1 249 sq. ft	1	6 AD 6 AD + 1 BB 4 AD + 2 CHD + 1 BB	2 King + Sofa Bed + 1 rollaway 2 King + Sofa Bed + Crib 2 King + Sofa Bed + Crib
PREMIUM OCEAN VIEW DUPLEX 73 m <sup>2</sup> – 786 sq. ft	10	2 AD + 2 CHD + 1 BB 2 AD + 2 CHD 4 AD + 1 BB	1 King + Sofa Bed + Crib 1 King + Sofa Bed + 1 rollaway 1 King + Sofa Bed + Crib



**ROOMS & SUITES**

**OUR UNITS WITH KITCHEN**

# BEDDING CONFIGURATION AND MAXIMUM CAPACITY

Room Type	Rooms	Maximum Occupancy	Bed Configuration
OCEAN VIEW ROOM with kitchen 43 m <sup>2</sup>	13	2 AD + 1 BB	1 King ou 2 Twin + 1 crib
OCEAN VIEW SUITE with kitchen 73 m <sup>2</sup>	6	2 AD + 2 E + 1 BB 2 AD + 2 E 4 AD + 1 BB	1 King ou 2 Twin + 1 sofa bed + 1 crib 1 King + 1 sofa bed 1 King + 1 sofa bed + 1 crib
PREMIUM OCEAN VIEW ROOM with kitchen 43 m <sup>2</sup>	3	2 AD + 1 BB	1 King ou 2 Twin + 1 crib
PREMIUM OCEAN VIEW SUITE with kitchen 73 m <sup>2</sup>	3	2 AD + 2 E + 1 BB 2 AD + 2 E 4 AD + 1 BB	1 King ou 2 Twin + 1 sofa bed + 1 crib 1 King or 2 Twin + 1 sofa bed + 1 rollaway 1 King or 2 Twin + 1 sofa bed + 1 crib
PREMIUM DUPLEX OCEAN VIEW with kitchen 73 m <sup>2</sup>	4	2 AD + 2 E + 1 BB 2 AD + 2 E 4 AD + 1 BB	1 King + 1 sofa bed + 1 crib 1 King + 1 sofa bed + + 1 rollaway 1 King + 1 sofa bed + 1 crib



**SIGNATURE ROOMS & SUITES  
LOCATED IN FRONT OF THE MATAVAI BAY**

**ALL OUR UNITS OFFER A 2 SEATER HOT TUB**

**IN SOME OF THEM A KITCHEN OPTION IS AVAILABLE**





## Ocean Front Signature Room with hot tub

50,2 m<sup>2</sup>

Large outside terrace facing the Matavai Bay

1 room with hot tub and shower room

Air conditioned

Safe and mini bar

Color TV, telephone and radio

Coffee and tea making facilities

Hair dryer + 110 & 220 volts

Free Wi-Fi internet access

Iron & ironing board are available by calling housekeeping

Turndown Service



## Ocean Front Signature Suite with hot tub

76,5 m<sup>2</sup>

Large outside terrace facing the Matavai Bay

1 room with dressing and shower room

Large living room with ocean view, sofa bed and hot tub

Air conditioned

Safe and mini bar

Color TV, telephone and radio

Coffee and tea making facilities

Hair dryer + 110 & 220 volts

Free Wi-Fi internet access

Iron & ironing board are available by calling housekeeping

Turndown Service



## Ocean Front Signature Suite with 2 bedrooms and hot tub

107,7 m<sup>2</sup>

Large outside terrace facing the Matavai Bay

1 master bedroom with its own shower room

Second room with its own shower room and dressing

Large living room with ocean view, sofa bed and hot tub

Air conditioned

Safe and mini bar

Color TV, telephone and radio

Coffee and tea making facilities

Hair dryer + 110 & 220 volts

Free Wi-Fi internet access

Iron & ironing board are available by calling housekeeping

Turndown Service



## Ocean Front Signature Suite with hot tub and kitchen

76,5 m<sup>2</sup>

Large outside terrace facing the Matavai Bay

1 master bedroom with its own shower room

Large living room with ocean view, sofa bed and hot tub

Fully equipped kitchen

Air conditioned

Safe and mini bar

Color TV, telephone and radio

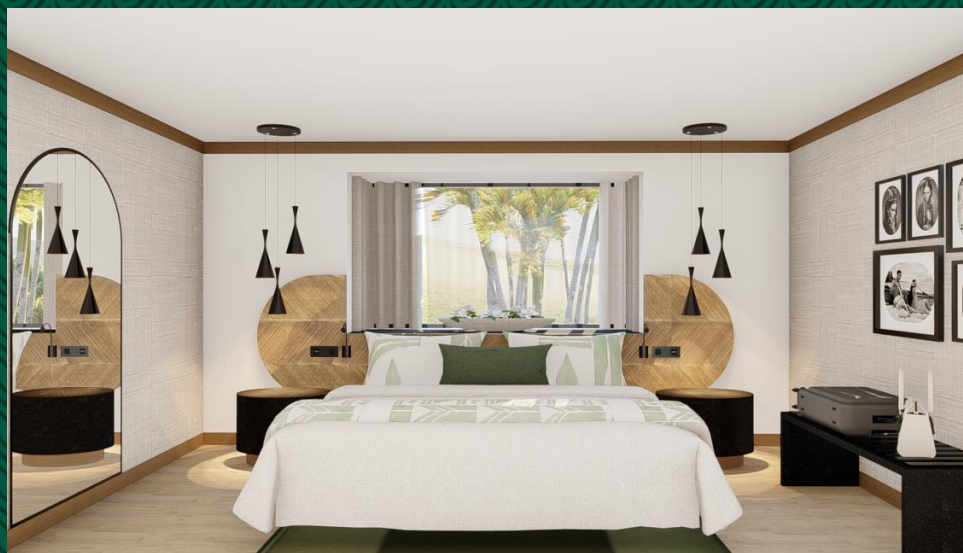
Coffee and tea making facilities

Hair dryer + 110 & 220 volts

Free Wi-Fi internet access

Iron & ironing board are available by calling housekeeping

Turndown Service



## Ocean Front Signature Suite with 2 bedrooms and hot tub and kitchen

116 m<sup>2</sup>

Large outside terrace facing the Matavai Bay

1 master bedroom with its own shower room

Second room with its own shower room and dressing

Large living room with ocean view, sofa bed and hot tub

Fully equipped kitchen

Air conditioned

Safe and mini bar

Color TV, telephone and radio

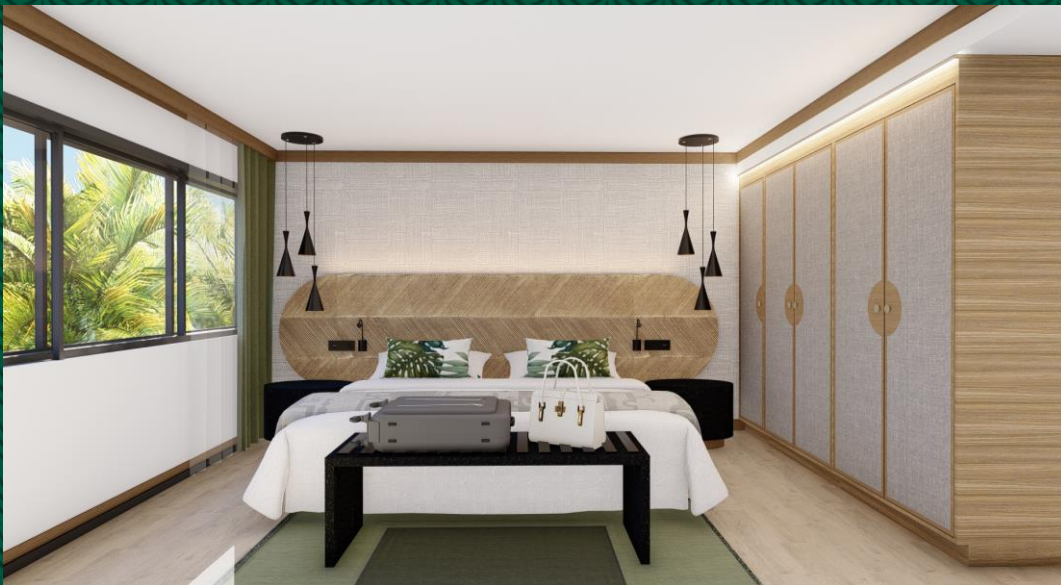
Coffee and tea making facilities

Hair dryer + 110 & 220 volts

Free Wi-Fi internet access

Iron & ironing board are available by calling housekeeping

Turndown Service



## Ocean Front Royal Suite with 2 rooms, kitchen and private plunge pool

174,4 m<sup>2</sup>

Private outside area of 42,7 m<sup>2</sup> including a large terrace facing the Matavai Bay and a plunge pool

1 master bedroom with its own shower room

Second room with its own shower room and dressing

Large living room with ocean view

Fully equipped kitchen

Air conditioned

Safe and mini bar

Color TV, telephone and radio

Coffee and tea making facilities

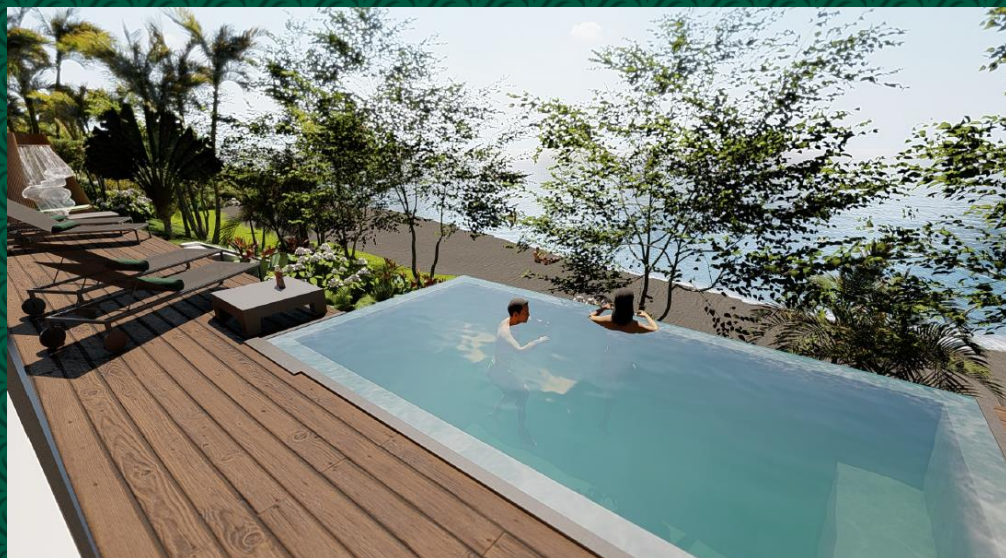
Hair dryer + 110 & 220 volts

Free Wi-Fi internet access

Iron & ironing board are available by calling housekeeping

Turndown Service

Home chef service on request



# BEDDING CONFIGURATION AND MAXIMUM CAPACITY



Room Type	Rooms	Maximum Occupancy	Bed Configuration
OCEAN FRONT SIGNATURE ROOM with hot tub 50,2 m <sup>2</sup>	6	2 AD + 1 BB	1 King ou 2 Twin + 1 crib
OCEAN FRONT SIGNATURE SUITE with hot tub 76,5 m <sup>2</sup>	12	2 AD + 2 E + 1 BB 2 AD + 2 E 4 AD + 1 BB	1 King ou 2 Twin + 1 sofa bed + 1 crib 1 King + 1 sofa bed 1 King + 1 sofa bed + 1 crib
OCEAN FRONT SIGNATURE 2 BEDROOMS SUITE with hot tub 116 m <sup>2</sup>	6	4 AD + 2 E + 1 BB 4 AD + 2 E 6 AD + 1 BB	2 King ou 4 Twin + 1 sofa bed + 1 crib 2 King + 1 sofa bed 2 King + 1 sofa bed + 1 crib
OCEAN FRONT SIGNATURE SUITE with hot tub and kitchen 76,5 m <sup>2</sup>	2	2 AD + 2 E + 1 BB 2 AD + 2 E 4 AD + 1 BB	1 King ou 2 Twin + 1 sofa bed + 1 crib 1 King + 1 sofa bed 1 King + 1 sofa bed + 1 crib
OCEAN FRONT SIGNATURE 2 BEROOMS SUITE with hot tub and kitchen 116 m <sup>2</sup>	1	4 AD + 2 E + 1 BB 4 AD + 2 E 6 AD + 1 BB	2 King ou 4 Twin + 1 sofa bed + 1 crib 2 King + 1 sofa bed 2 King + 1 sofa bed + 1 crib
OCEAN FRONT ROYAL 2 BEDROOMS SUITE with plunge pool and kitchen 174,4 m <sup>2</sup>	1	4 AD + 2 E + 1 BB 4 AD + 2 E 6 AD + 1 BB	2 King ou 4 Twin + 1 sofa bed + 1 crib 2 King + 1 sofa bed 2 King + 1 sofa bed + 1 crib



## The little ones

Are considered children those under the age of 13 years old.

Are considered babies and infants those under the age of 3 years old.

A Kids' Menu is available in our restaurants (not complimentary). A 50% discount applies on themed dinners or festive season dinners. There are no discounts for kids on the regular menu or à la carte.



## Guests with Limited Mobility

Three of our units are equipped for guests with limited mobility (1 Ocean View Suite and 2 Deluxe Ocean View Rooms).

Cement paths or wooden decks connect the rooms to the public areas (accessible restrooms.) All hotel services are accessible to guests with reduced mobility.

Our staff is available to assist at all times.



**Dolphins:** Year-round, from your balcony terrace or during breakfast time at the restaurant, watch wild dolphins playing in the Bay of Matavai.

**Sanctuary for humpback whales:** From July to November, the Bay of Matavai is a safe haven for humpback whales. You can watch them in the morning from your balcony, while having a meal at the Hiti Mahana Restaurant or sipping a drink at the Bay Bar.

**The longest natural sandy beach:** the Lafayette Beach is well known for its majestic tropical surroundings. Its black and very fine sand is used in spas around the world for its exfoliating properties and mineral wealth.

The  
« Musts »





## Useful Tips to Prepare your Trip

- The Islands of Tahiti are tropical islands and receive a lot of sunshine as well as unpredictable rain showers. Bring your sun protection!
- Although most resorts do their best to act against insects and mosquitoes, tropical weather conditions can affect the treatments done. Mosquito repellent is highly recommended when traveling in the Islands of Tahiti in general.
- Major credit cards are accepted for payment in the resort.





## RESORT MAP

# Le Tahiti by Pearl Resorts

B.P. 14170

98701 Arue, Tahiti

French Polynesia

Reservations :

[reservations@pearlresorts.com](mailto:reservations@pearlresorts.com)

Contact :

[welcome@letahiti.com](mailto:welcome@letahiti.com)

[www.letahiti.com](http://www.letahiti.com)

