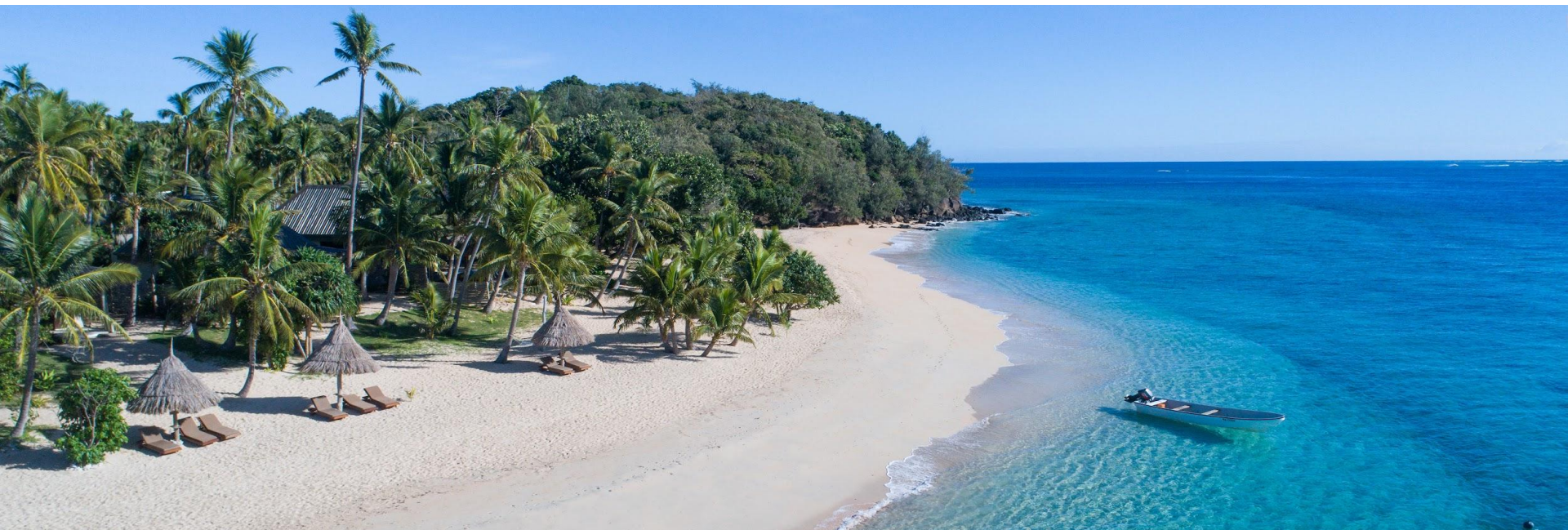




paradise
cove
- Yasawa Islands Fiji -



PARADISE COVE - AMENITIES

Resort Gym & Yoga	Spa	Kids Club	Mei Mei Mama	Laundry
<p>A private purpose-built Yoga deck at the Gym centre to enjoy the sea breezes and uninterrupted views of the ocean.</p> <p>The yoga and gym centre is also available to all guests complimentary, air-conditioned, ocean views to work out too doesn't get much better than this.</p> <p>Open from 6pm - 10pm</p>	<p>Infused with a diverse range of Pure Fiji products,</p> <p>With highly trained and experienced therapists who will work with you, one on one to create a fully customizable spa experience inspired by both the rhythms of your body and the island around you.</p>	<p>The kids club is free of charge and available year-round for children three years or older.</p> <p>Operates from 10am until 12.30pm, 2pm until 5.00pm. At 6.00pm there is a supervised "kid's dinner," and then off to the kids club hut until 9 pm.</p> <p>Teens Yurt</p> <p>The Teen Yurt is free of charge and available all year round for teens 13yrs years or older.</p> <p>hang out/board games/ Xbox/air hockey</p> <p>Open from 8am - 10pm</p>	<p>Sitter service is available from 8am - 9pm daily,</p> <p>This is a complimentary service for up to four hours per day for those in Cove Villa and above categories, with each additional hour fjd\$20 per hour.</p> <p>For our Bungalow guests, it is a flat fjd\$20 per day for the 1st four hours, and fjd\$20 per hour for any additional hours.</p>	<p>Wash and fold laundry service for all guests 24 hour turn around service.</p> <p>A washing basket is provided in each villa.. Cove Villa & above room categories receives 1 complimentary load per stay, and each additional load is fjd\$25 Bungalow fjd\$25 per load</p>

RESTAURANT / BAR



Meal plans are separate to your accommodation costs and are set as a 24-hour rate to include breakfast, lunch, and dinner.

BLACKROCK RESTAURANT:

- **Breakfast** begins from 7.00am until 10 am with a la carte breakfast menu
- **Lunch** is served from 12.30 pm until 2.30 pm. You can dine at either Black Rock or Donu
- **Dinner** is served from 6.30pm pm until late. You can dine at either Black Rock or Donu

DONU'S: A fusion of local Fijian ingredients, with Japanese technique, to create a truly unique Omakase evening dining experience, with tables and seats around our outdoor Japanese kitchen in The Cove

DONU PRE BOOK Lunch & Dinner ahead of arrival - <https://www.paradisecoveresortfiji.com/dine/donu-tapas>

DIETARY: vegetarians, gluten intolerances, dairy & most food allergies can be catered for

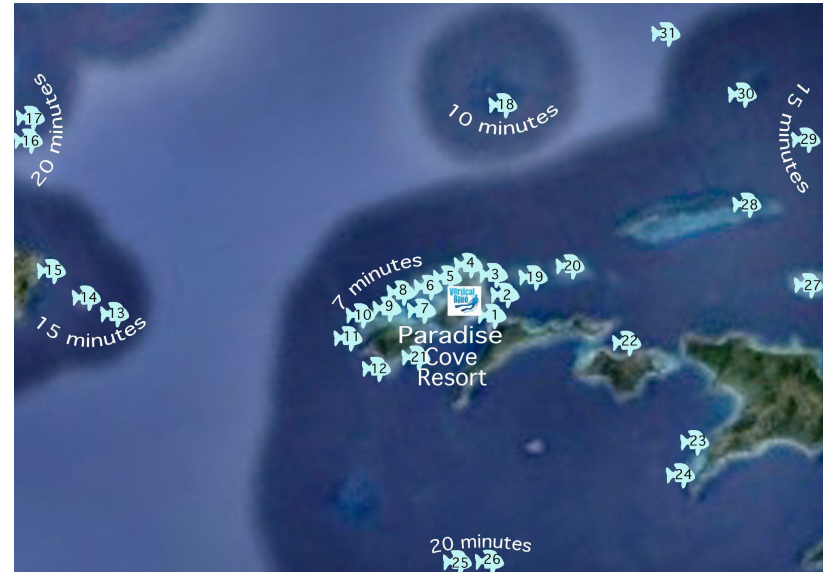
Sandbar - Main Resort / **Boat Bar** - Cove Area

SAND BAR: next to the main pool and overlooking the beach, for everything from sunset cocktails, chilled champagne, imported and local beers and of course, the ever-popular happy hour.

BOAT BAR: Located by the Donu restaurant & pool area to enjoy cocktails, chilled champagne, imported and local beers and of course, the ever-popular happy hour

PADI DIVE CENTRE

- With 35 different dive sites in the area from reefs, drop-offs, pinnacles, swim through and two amazing wreck dives.
- All sites are from 2 minutes to 25 minutes away, with dives guided from the boat.
- Scheduled dive are three times a day every day - 9 am, 11 am, and 2 pm
- Full range of equipment, wetsuits, fins, masks, B.C.D's, etc., all housed in our dive shop.
- Travel insurance is required is to be sighted before diving



TRANSFERS

Aftershock / Waya Flyer - Boat

Operated by the Resort Directly

Departing Vuda Marina 8.30am arriving 10.30am Departing Paradise
Cove 10.30am arriving 12.30pm

Free Shuttle: Available to and from Vuda Marina within the Nadi
/ Denarau area's

Travel Time: 1.5hours **weather dependant*

Seating: 20

Private Charter

Departing / Arrival Vuda Marina

Operating between 8.30am - 3pm

Free Shuttle: Available to and from Vuda Marina within
the Nadi / Denarau area's

Travel Time: 1.5hours **weather dependant*

Seating: 20

Yasawa Flyer - Boat

Operated Awesome Adventure

Departing Vuda Marina 8.45am arriving 11.30am

Departing Paradise Cove 3pm arriving 5.45pm

Free Coach Available to and from Port Denarau within the Nadi
/ Denarau area's

Private transfer to/from Port, hotel or the airport available for an
additional cost.

Travel Time: 3 hours

Seating: 200 catamaran

Heli - Air transfer

Operated Island Hoppers

Depart Nadi Airport *Denarau heli paid additional charge

Arrival: Nadi Airport *Denarau heli paid*additional charge

Private transfer to/from Heli pad, hotel available for an
additional cost.

Travel Time: 30mins **weather dependant*

Seating: 6

ACCOMMODATION - GARDEN BUNGALOWS

X8 Available Rooms / Garden view

Room Size: 40m2 deck size 9m2

Bedding: 1 King OR 2x Single Bed (1x Additional Single Bed OR cot OR bunk bed can be added on request)

- Air Conditioner
- Outdoor Balcony
- Daily House Keeping
- Room Safe
- Ceiling Fan
- Wardrobe
- Free In Room Wifi
- TV
- Iron & Board
- Coffee & Tea Making
- Telephone
- Hair Dryer
- Mini Bar Fridge
- Pillow Menu
- Iron & Board



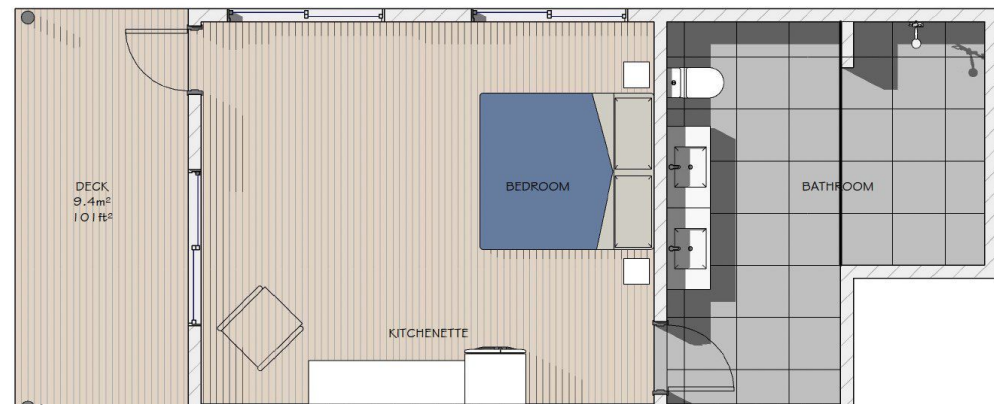
ACCOMMODATION - PARADISE GARDEN BUNGALOWS

X6 Available Rooms / Garden view

Room Size: 40m² deck size 9m²

Bedding: 1 King OR 2x Single Beds (1x Additional Single Bed OR cot OR bunk bed can be added on request)

- Air Conditioner
- Outdoor Balcony
- Daily House Keeping
- Room Safe
- Ceiling Fan
- Wardrobe
- Free In Room Wifi
- TV
- Iron & Board
- Coffee & Tea Making
- Telephone
- Hair Dryer
- Mini Bar Fridge
- Pillow Menu
- Iron & Board



ACCOMMODATION - COVE VILLA

X10_Available Rooms / Pool - Garden view

Room Size: 60m2 deck size 12m2

Pool View

Bedding: 1 King & Bunk OR 2x Singles & Bunk (Additional cot can be added on request)

- Air Conditioner
- Daily Housekeeping
- Room Safe
- Ceiling Fan
- Wardrobe
- Complimentary Mini Bar on arrival
- Free In Room Wifi
- TV
- Coffee & Tea Making
- Telephone
- Bath Robes & Slippers
- Hair Dryer
- Pillow Menu
- Coffee And Tea Making
- Pure Fiji Bathroom Amenities
- Double Bathroom Vanity
- Lounge Area
- Outdoor Balcony Seating
- Iron & Board
- Mei Mei Mama Complimentary 4 Hour Per Day Babysitter
- One Complimentary Laundry Fold And Wash



ACCOMMODATION - 2 BEDROOM GARDEN VILLA

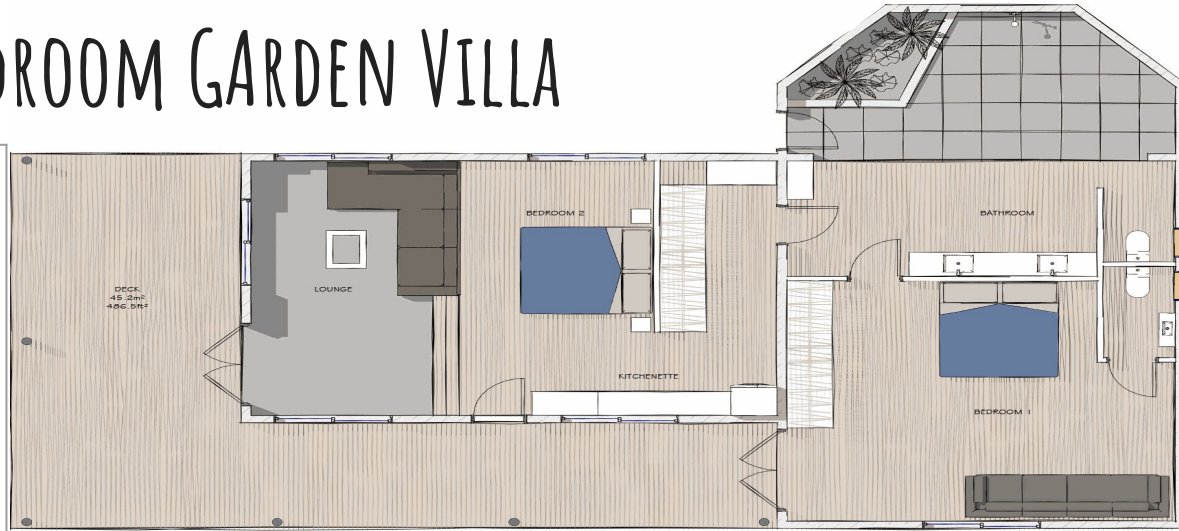
X5-Available Rooms / Garden View

Room Size: 94m2 deck size 45m2

Garden View

Bedding: 1 King & 2x Single Beds OR 2x King (2x Additional Single Bed or cot can be added on request)

- Air Conditioner
- Daily Housekeeping
- Room Safe
- Ceiling Fan
- Wardrobe
- Complimentary Mini Bar on arrival
- Free In Room Wifi
- TV
- Coffee & Tea Making
- Telephone
- Bath Robes & Slippers
- Hair Dryer
- Pillow Menu
- Coffee And Tea Making
- Pure Fiji Bathroom Amenities
- Double Bathroom Vanity
- Lounge Area
- Outdoor Balcony Seating
- Iron & Board
- Mei Mei Mama Complimentary 4 Hour Per Day Babysitter
- One Complimentary Laundry Fold And Wash



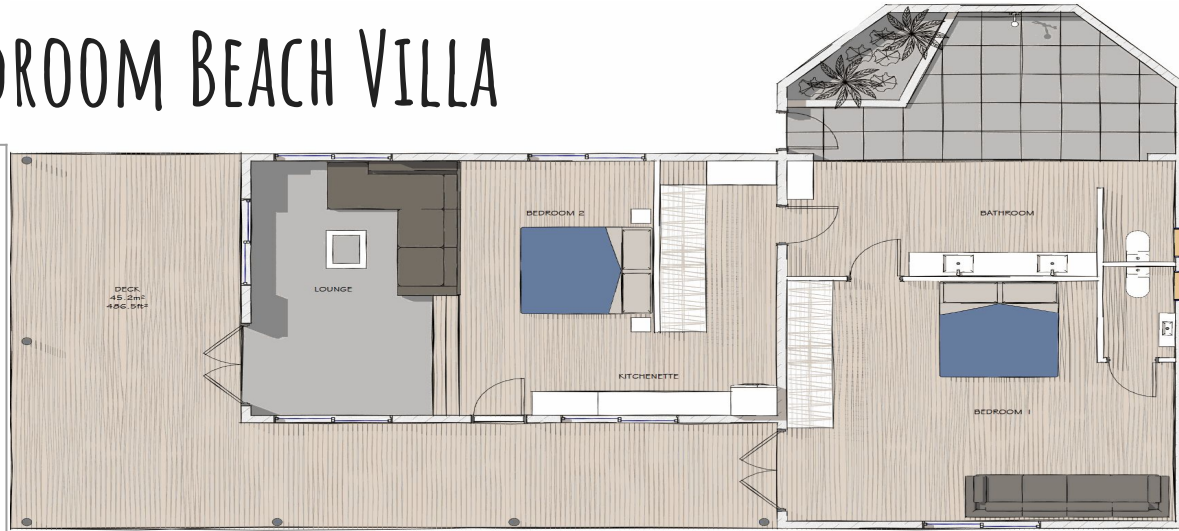
ACCOMMODATION - 2 BEDROOM BEACH VILLA

X5 Available Rooms / Beachfront View

Room Size: 94m2 deck size 45m2

Bedding: 1 King & 2x Single Beds OR 2x King (2x Additional Single Bed or cot can be added on request)

- Air Conditioner
- Daily Housekeeping
- Room Safe
- Ceiling Fan
- Wardrobe
- Complimentary Mini Bar on arrival
- Free In Room Wifi
- TV
- Coffee & Tea Making
- Telephone
- Bath Robes & Slippers
- Hair Dryer
- Pillow Menu
- Coffee And Tea Making / Nespresso Coffee Machine
- Pure Fiji Bathroom Amenities
- Double Bathroom Vanity
- Lounge Area
- Outdoor Balcony Seating
- Iron & Board
- Mei Mei Mama Complimentary 4 Hour Per Day Babysitter
- One Complimentary Laundry Fold And Wash
- Private Sun Loungers And Umbrella



ACCOMMODATION - BEACH VILLA

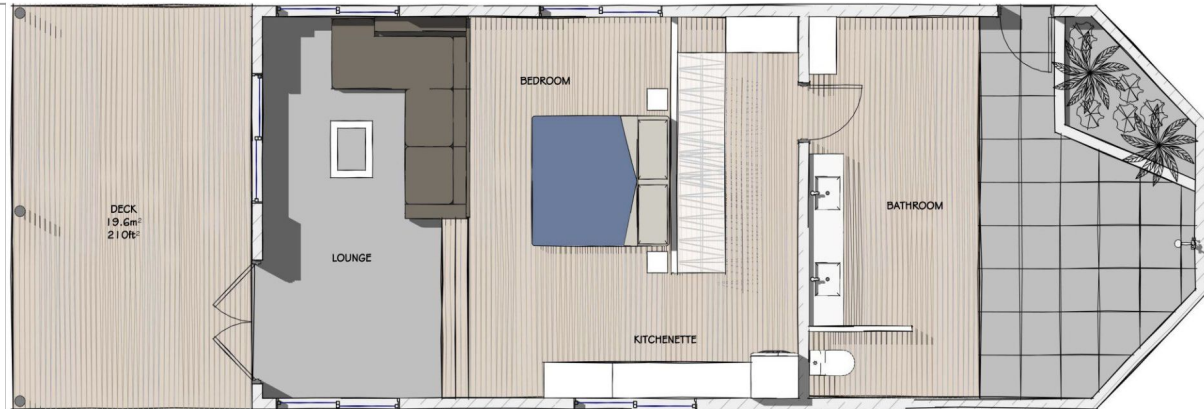
X4 Available Rooms / Beachfront View

Room Size: 70m2 deck size 20m2

Beachfront View

Bedding: 1 King (Additional Single Bed or cot can be added on request)

- Air Conditioner
- Daily Housekeeping
- Room Safe
- Ceiling Fan
- Wardrobe
- Complimentary Mini Bar on arrival
- Free In Room Wifi
- TV
- Coffee & Tea Making
- Telephone
- Bath Robes & Slippers
- Hair Dryer
- Pillow Menu
- Coffee And Tea Making / Nespresso Coffee Machine
- Pure Fiji Bathroom Amenities
- Double Bathroom Vanity
- Lounge Area
- Outdoor Balcony Seating
- Iron & Board
- Mei Mei Mama Complimentary 4 Hour Per Day Babysitter
- One Complimentary Laundry Fold And Wash
- Private Sun Loungers And Umbrella



ACCOMMODATION - PARADISE SUITE

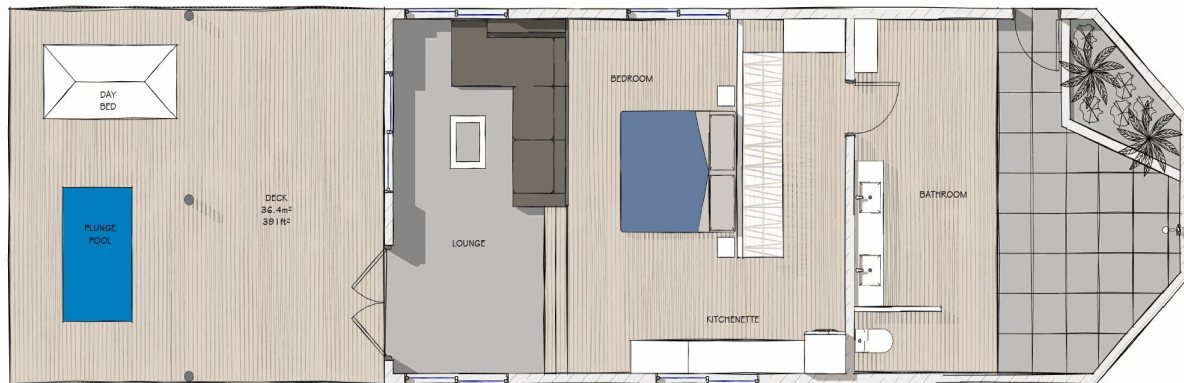
ADULTS ONLY X4 Available Rooms / Beachfront View

Room Size: 70m2 deck size 20m2

Beachfront View

Bedding: 1 King

- Air Conditioner
- Daily Housekeeping
- Room Safe
- Ceiling Fan
- Wardrobe
- Complimentary Mini Bar on arrival
- Free In Room Wifi
- TV
- Coffee & Tea Making
- Telephone
- Bath Robes & Slippers
- Hair Dryer
- Pillow Menu
- Coffee And Tea Making / Nespresso Coffee Machine
- Pure Fiji Bathroom Amenities
- Double Bathroom Vanity
- Lounge Area
- Outdoor Balcony Seating
- Iron & Board
- Mei Mei Mama Complimentary 4 Hour Per Day Babysitter
- One Complimentary Laundry Fold And Wash
- Private Sun Loungers And Umbrella



ACCOMMODATION - PRIVATE BEACH HOUSE

X4 Available Rooms / Beachfront View

Room Size: 94m2 deck size 45m2

Beachfront View

Bedding: 1 King & 2x Single Beds OR 2x King (1x Additional Single Bed or cot can be added on request)

- Air Conditioner
- Daily Housekeeping
- Room Safe
- Ceiling Fan
- Wardrobe
- Complimentary Mini Bar on arrival
- Free In Room Wifi
- TV
- Coffee & Tea Making
- Telephone
- Bath Robes & Slippers
- Hair Dryer
- Pillow Menu
- Coffee And Tea Making / Nespresso Coffee Machine
- Pure Fiji Bathroom Amenities
- Double Bathroom Vanity
- Lounge Area
- Outdoor Balcony Seating
- Iron & Board
- Mei Mei Mama Complimentary 4 Hour Per Day Babysitter
- One Complimentary Laundry Fold And Wash
- Private Sun Loungers And Umbrella

