



WANDERER CRUISE - 5 Day / 4 Nights



Wander the white sand beaches of the Yasawas...

CHECK-IN From 11.30am to 11.45am at the South Sea Cruises counter at Port Denarau

DEPART PORT DENARAU Mondays at 12.15pm on a high-speed catamaran transfer

RETURN TO PORT DENARAU Fridays at 10.00am on M.V. Fiji Princess

MONDAY - 1ST NIGHT: YALOBIBAY

Following a private high-speed catamaran transfer to the Sacred Islands, you'll be welcomed aboard M.V. Fiji Princess. Settle into your cabin then choose to have your picnic style lunch on the ship or take it to the beach. Spend your afternoon snorkelling, swimming and relaxing on the beach. Enjoy a complimentary sparkling wine and canapés as you mix and mingle with your fellow cruisers prior to the Captain's Welcome à la carte dinner. After dinner, be in to win with our 'Song Facts' quiz night.

TUESDAY - 2ND NIGHT: BLUE LAGOON

Today's destination is the famous Blue Lagoon and our own private beach on beautiful Nanuya Lailai Island. M.V. Fiji Princess will tie off to a coconut tree and this is your chance to jump off the back of the ship and swim to shore. Optional activities include snorkelling, fish feeding, volleyball, water aerobics and a coconut husking demonstration. A BBQ lunch will be served on the beach while tonight's dinner is a traditional Fijian Lovo – a meal cooked underground in a fire pit. Tonight's entertainment is a Meke performance by local villagers.

WEDNESDAY - 3RD NIGHT: SAWA-I-LAU

Stretch your legs this morning with a guided walk to Lo's Tea House on the other side of the island. Afterwards, the tender boats will whisk you back to the M.V. Fiji Princess where you have time for a quick dip at the beach before we depart. We cruise north over lunch to visit the sacred Sawa-I-Lau Caves, an unforgettable experience. Late afternoon we visit Tamasua Village where you'll enjoy a traditional seafood dinner in the village. Tonight, enjoy movie night under the stars on the Sky Deck.

THURSDAY - 4TH NIGHT: DRAWAQA ISLAND

This morning you can choose to visit a local school before we head south to Drawaqa Island. A marine biologist will join us on board to tell us about the marine life, coral reefs and the conservation programmes underway in the Yasawas. This afternoon you can take part in a handline fishing trip or try your hand at scuba diving (additional cost), go in search of the manta rays (May-Oct, also tide dependant) or simply relax on the beach. For our last night together, we'll have a BBQ on the Sky Deck (weather permitting) followed by a disco. Boogie on down!

FRIDAY

Enjoy breakfast on board as M.V. Fiji Princess cruises back to Port Denarau. Back at port you'll be serenaded with the traditional Isa Lei farewell song by the crew, as your exploration of the beautiful Yasawa Islands comes to an end.



T +679 999 5512

E cruisecentre@bluelagooncruises.com

W bluelagooncruises.com



[bluelagooncruises](https://www.facebook.com/bluelagooncruises)



[@bluelagooncruises](https://www.instagram.com/bluelagooncruises)



**BLUE LAGOON
CRUISES**

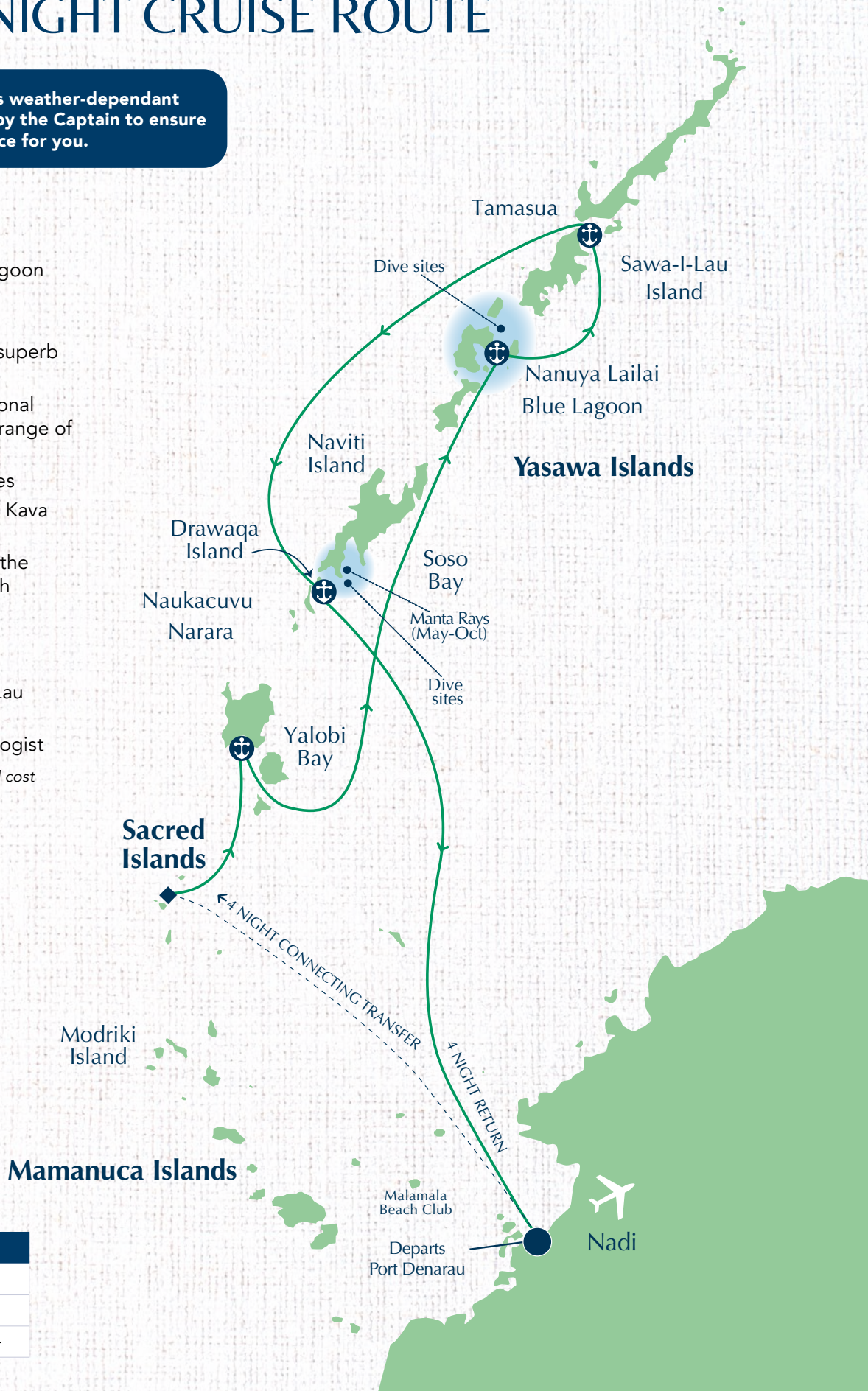
5 DAY / 4 NIGHT CRUISE ROUTE

The actual route sailed is weather-dependant and will be determined by the Captain to ensure the best cruise experience for you.

HIGHLIGHTS

- Visit the famous Blue Lagoon
- Swim with manta rays (May to October)
- Snorkel or dive* around superb tropical reefs
- Dine on delicious traditional Fijian meals as well as a range of international cuisine
- Visit remote Fijian villages
- Take part in a traditional Kava ceremony
- Picnic and dinner under the stars at our private beach Nanuya Lailai
- Onboard spa and beach massage bure*
- Visit the sacred Sawa-I-Lau Caves
- Talk by local Marine Biologist

*Optional activities at additional cost



KEY	
	Anchorage
	4 Night Cruise
	Daytime stopover

BLC20150



USEFUL TIPS FOR YOUR HOLIDAY

VALID FOR TRAVEL FROM 01 APRIL 2024 - 31 MARCH 2026

You're on your way to a holiday in paradise! Holidaying with Blue Lagoon Cruises is a carefree and delightful way to experience Fiji. Most importantly, don't forget to relax and enjoy this beautiful part of the world. Below are a few handy hints for your trip.

GREETINGS

Our crew are all Fijian, and although they all speak fantastic English, it'll make their day if you know a few Fijian words:

- **Bula** - hello (accompanied by an ear-to-ear Fiji grin)
- **Moce** (pronounced 'mothy') - goodbye
- **Yadra** (pronounced 'yandra') - good morning
- **Vinaka** - thank you
- **Sega na lega** (pronounced "senga na lenga") - no worries

WHAT TO BRING

- A digital/printed copy of your booking confirmation/reference number for check-in purposes
- Casual and informal clothing, with an emphasis on casual resort wear
- Swimwear, sun hat, sunglasses and a rash shirt/T-shirt for snorkelling
- Sunscreen and insect repellent
- A light jacket/sweater for cooler evenings
- If you wish to take up the optional diving excursions, you will need to ensure you bring your relevant dive certification. To arrange a dive during your trip, please email our reservations team with your booking details so they will add this to your booking.
- We do have a large selection of snorkels, masks, and flippers on board for you to use however if you feel more comfortable bringing your own please feel free to do so. Should you choose to use our onboard equipment we will also have new mouthpieces available for purchase for FJD\$10.00 per piece adult and youth sizes (note all our equipment is well sanitised prior to being given to you to use for the duration of your cruise).
- Many of our guests fall in love with the friendly nature of Fijian's and are especially taken with the wide-eyed curiosity of the children. The villagers do not expect gifts from our guests, but many of our guests ask us what items they can bring to give away to village children. School supplies (pens, pencils, crayons, drawing/colouring books, notepads and the like) are always most welcome, as are sports items such as rugby and soccer balls. Items of clothing are also well received.

We do not suggest school learning books as the importation of relevant educational material is subject to Ministry of Education approval.

TRAVEL INSURANCE

It is essential that all Blue Lagoon Cruises passengers have valid travel insurance. Please bring details of your insurance policy with you.

MONEY

CASH

For your convenience we operate a cashless system. You may use your Cruise Account for onboard drinks and some optional shore excursions such as diving. All purchases on board are charged to your account for settlement at the end of the cruise. We accept all major credit cards. Your Cruise Account must be settled prior to disembarkation. Limited foreign currency, cash or credit cards (Visa, Master Card, and American Express) will be accepted for payment of your account. An administration fee of 2.5% applies to all Visa and Master Card transactions and 3% applies to American Express transactions.

You should however, have some cash with you in case you want to buy some souvenirs during the village visits. Please note there are no banks or ATM machines in the Yasawa Islands. Cash machines are located in Nadi and at most resorts in Denarau as well as at Port Denarau.

TIPPING

Gratuities are not required. However, if you wish to offer a gratuity as a gesture of thanks for services rendered, please leave it with our Guest Services Manager.

GIVING BACK TO FIJIAN COMMUNITIES

Rather than a gratuity payment, Blue Lagoon Cruises invites you to join us in supporting Vinaka Fiji (a charitable organisation that works towards improving the provision of basic needs and amenities in the Yasawa Islands) by allowing the donation that will be added to your account at the end of your stay, remain. You will have the chance to decline or alter the amount. The standard donation amounts are FJD\$100 per cabin for 3 and 4 night itineraries and FJD\$150 per cabin for 7 night itineraries.



USEFUL TIPS FOR YOUR HOLIDAY

VALID FOR TRAVEL FROM 01 APRIL 2024 - 31 MARCH 2026

CHECK-IN / DISEMBARKATION

CHECK-IN LOCATION

Blue Lagoon Cruises desk, Port Denarau, Nadi, Fiji.

TRANSFERS PRE/POST CRUISE

Complimentary seat-in-coach transfers to & from Port Denarau are available from most Nadi/Denarau hotels as well as Nadi Airport on the day of your cruise departure & return - please ensure these are requested at time of booking. Private transfers can also be provided for an additional charge.

CHECK-IN TIME

Check-in is generally available from 1.5 hours prior to your cruise departure. Please check your cruise itinerary for your scheduled check-in time.

LUGGAGE

Luggage is limited to what you can stow in your cabins, so you would be advised not to over-pack. All bags must be clearly labelled with your name. Bags are handled by our crew and we would appreciate a weight limit of 25kg per person.

DISEMBARKATION

On the final day of your cruise please leave your luggage outside your cabin before 9am (it will be taken ashore by our crew) and return your key to reception. All Cruise Accounts must be settled at reception between 6am and 8am. Our crew will give you a special farewell before disembarkation.

ONBOARD

Our reception is manned from 7am onwards, however please feel free to approach our Guest Services Manager at any time should you have a query.

ONBOARD AMENITIES

ACCOMMODATION (*M.V. Fiji Princess*)

32 cabins across three decks, all of which open to an inside passageway and have porthole windows. Each room is serviced daily and has a yacht-style en suite, individually controlled air-conditioning, hair dryers, 240-volt power with 110-volt converters available if required, international shaver points, toiletries and towels. Each evening while you are dining, there is a turndown service for your room, during which you'll receive a copy of the following day's itinerary.

AIR CONDITIONING

Cabins have individual air-conditioning units with a simple on/off switch and temperature gauge. If you wish to leave your cabin door open, please switch off the air conditioning.

FACILITIES

Swimming / splash pool, spa, sun deck, cocktail bar, open-air dining lounge, small guest library and movies (available on hard drives on request); self-service guest laundry and 24-hour coffee and tea facilities (available in the dining room & lounge).

GAMES / BOOKS

A small selection of games and books are located in the bar/lounge area. Please return after use. Kindly return or swap books with any you have brought so that others can enjoy them.

LAUNDRY

The complimentary self-service passenger laundry contains a washing machine, tumble dryer, ironing board, iron and washing tub. Washing powder is available from reception. For line-drying clothes, your cabin has a small clothesline in the bathroom plus there are drying racks on the outer decks.

MEDICAL

There is no pharmacy onboard, but we do carry first aid kits and a defibrillator. Please ensure you bring adequate supplies of any prescription medicines you may require. If you have a pre-existing medical condition, we request that you inform us before joining your cruise. The ship's crew does not include a doctor; however, our Officers are trained in first aid for the administration of basic emergency medication. In case of medical emergencies, evacuation from the ship is possible by seaplane, helicopter or fast speedboat. Make sure you have travel insurance as this can be expensive.

SMOKING

Smoking is only permitted in very limited areas of the ship. Smoking is not permitted in cabins.

STORAGE

Any valuables can be given to the Guest Services Manager who will store and log them for security purposes.

SPA

Our onboard spa is on the ship's aft deck. We offer a range of spa treatments, beauty therapy and massage at an additional cost.

TOWELS

Beach towels for use ashore are available from reception. We kindly ask you to use one beach towel for the duration of the day. New towels will be issued each morning.

WIFI

M.V. Fiji Princess has an onboard satellite phone and radio. Throughout much of the Yasawa and most of the Mamanuca Islands you will be able to get mobile phone reception. We offer free satellite Wi-fi on-board, which has good connection throughout the islands.





USEFUL TIPS FOR YOUR HOLIDAY

VALID FOR TRAVEL FROM 01 APRIL 2024 - 31 MARCH 2026

FOOD AND DRINK

Dining is a vital part of the Blue Lagoon Cruises experience and will range from al fresco lunches and gourmet barbecues to traditional lovos or the a la carte Captain's Welcome Dinner. Our food is prepared on board using fresh local and imported produce and our onboard entertainment adds a special flavour to the mix. Breakfast is served from 7am - 9am; lunch is at 12pm or 12.30pm; and dinner is from 7pm - 8pm or as otherwise advised. There is one sitting for meals. Table seating for all meals is unassigned.

ALCOHOL

We regret that Fijian licensing laws do not permit passengers to bring their own alcohol on board M.V. Fiji Princess. Receipted storage facilities are available.

BIRTHDAYS & SPECIAL OCCASIONS

You may like to order a cake, champagne or make some other celebratory arrangement for a special occasion. Please contact our reservations team by email and allow two weeks' notice before sailing.

DIETARY NEEDS

Passengers with dietary requirements or requiring special meals should advise Blue Lagoon Cruises in writing at least two weeks prior to sailing and discuss with the Guest Services Manager on boarding. Most special diets can be catered for.

WATER

We have installed filtered water stations throughout the vessel and all guests are provided with a reusable stainless steel drink bottle on arrival as we are a single use plastic free vessel.

TEA & COFFEE

24-hour complimentary tea and coffee is available. There are two self-service tea/coffee stations on the vessel, one located in the lounge area and one in the dining room.



EXCURSIONS

During every Blue Lagoon Cruises itinerary, we offer a number of included shore excursions. As a courtesy to your fellow passengers, please be prompt to gather at reception with any items you may need including sunglasses, sunscreen, hat, swimwear, towel and reef shoes (for wet landings) or walking shoes (details will be provided in your daily onboard itinerary). Remember to cover your shoulders and knees and remove hats and sunglasses when visiting villages.

SNORKELLING

Fins, masks and snorkels are available free of charge for every guest. Please return them before disembarkation.

If you feel more comfortable bringing your own please feel free to do so.

Should you choose to use our onboard equipment we will also have new mouthpieces available for purchase for FJD\$10.00 per piece adult and youth sizes (note all our equipment is well sanitised prior to being given to you to use for the duration of your cruise).



TERMS & CONDITIONS AND OUR REFUND POLICY ARE AVAILABLE AT WWW.BLUELAGOONCRUISES.COM

T +679 999 5512

E cruisecentre@bluelagooncruises.com

W bluelagooncruises.com

WhatsApp (message or call): +679 992 4469

 [bluelagooncruises](https://www.facebook.com/bluelagooncruises)

 [@bluelagooncruises](https://www.instagram.com/bluelagooncruises)



**BLUE LAGOON
CRUISES**



USEFUL TIPS FOR YOUR HOLIDAY

VALID FOR TRAVEL FROM 01 APRIL 2024 - 31 MARCH 2026

OPTIONAL ADD-ONS

DIVING

Dive opportunities are at an additional cost for both certified and intro divers. All certified divers must present an internationally recognised Open Water Dive Certificate to the dive instructor to participate in certified dives. Introductory (or beginner) divers are not required to have a certification card, however they will need to complete a medical and waiver form.

To avoid disappointment, passengers with any health issues or taking any medication, should visit their doctor to obtain a fitness to dive certificate prior to embarkation (not available in Fiji). Divers should register your interest with our Reservations department when booking your cruise. Up to one intro or certified dive per day can be pre-booked. Additional dives may be available subject to conditions – these can be booked on board with the Guest Services Manager.

COMPLIMENTARY INCLUSIONS

MALAMALA BEACH CLUB

All our guests receive a complimentary Day Pass to Malamala Beach Club with a FJ\$50 per adult Food & Beverage voucher.

Guests on the 3 and 7-night itineraries are invited to book our 'Moments at Malamala' add-on which sees guests check in their luggage at Port Denarau before transferring to Malamala Beach Club at 10am, 25 minutes away, with just a day pack. After a leisurely day making the most of the beach club's many facilities a tender boat will transfer guests to M.V. Fiji Princess where their luggage will be waiting in their cabin. See the website for more information and pricing.

Guests on our 4 Night itinerary can book their Malamala Day Pass on day that suits them either pre or post their cruise. This includes coach & vessel return transfers from most resorts and the FJ\$50 per adult F&B voucher to use on the island.



MALAMALA BEACH CLUB

Bubbles for Breakfast sparkling wine offered with breakfast daily.

Guided shore excursions such as village visits, school visit, meke performance with lovo, entrance fees, and activities as shown as included in each of the cruise itineraries.

"Sunset Hour" offering discounted drinks (25% discount) and complimentary canapes served between 6:00 - 7:00 pm (on the sky deck weather permitting, otherwise served in the lounge) offered Tuesday/Wednesday/Thursday/Saturday & Sunday.

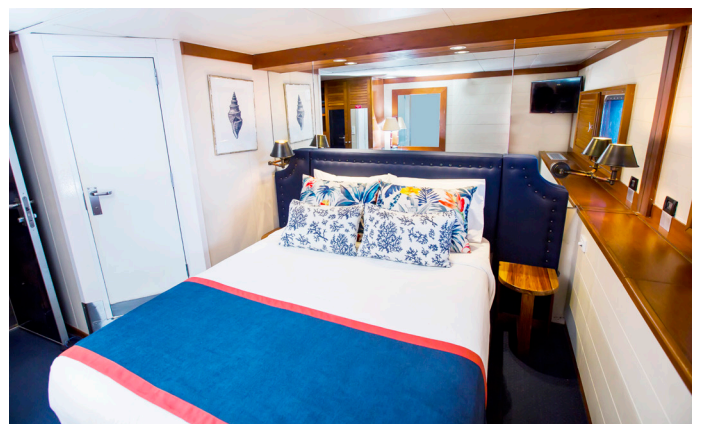
Twice weekly complimentary **"Captain's Welcome"** (Friday and Monday) – Complimentary sparkling wine and local beers with canapes served on the sky deck (weather permitting) from 6:00 - 7:00 pm, followed by the a-la-carte Captain's Dinner accompanied by a selection of complimentary house wines and local beers during the meal service (approximately 2 hours).

ALL cabins (both Orchid Deck and Hibiscus Deck) come with a **premium stocked mini-bar** (on day of departure only) that includes;

- Two brands of local beer, a selection of soft drinks, a bottle of French sparkling wine, premium Fijian chocolate, local gourmet snacks, and artesian mineral water. (Note that alcoholic beverages can be exchanged for non-alcoholic options if requested at the time of booking).

A **Blue Lagoon Cruises branded gift** of a stylish beach tote, a high-quality sulu (sarong), and a reusable drink bottle for each person.

In-cabin bathroom amenities & bathrobes.



TERMS & CONDITIONS AND OUR REFUND POLICY ARE AVAILABLE AT WWW.BLUELAGOONCRUISES.COM

T +679 999 5512

E cruisecentre@bluelagooncruises.com

W bluelagooncruises.com

WhatsApp (message or call): +679 992 4469

 [bluelagooncruises](https://www.facebook.com/bluelagooncruises)

 [@bluelagooncruises](https://www.instagram.com/bluelagooncruises)



**BLUE LAGOON
CRUISES**