

# *Experience* New Caledonia

EXPLORE, **TASTE,**  
DREAM or **DRIVE!**



New Caledonia  
Tourism

[www.newcaledonia.co.nz](http://www.newcaledonia.co.nz)

# Explore Noumea

It could be said that New Caledonia's capital Noumea offers visitors more than meets the eye.

From its charming city centre with the palm-fringed Place des Cocotiers at its heart and its gracious colonial buildings, to the picturesque bays of Baie des Citrons and Anse Vata – there is something for everyone along the way.



## ❖ Explore the Culture

Noumea's attractions are its many museums, its award-winning aquarium and the iconic Tjibaou Cultural Centre. Built in 1998 in



## Top things to see & do:

### ❖ Explore the Market

Noumea's daily market at Port Moselle the Latin quarter, is the perfect start. An increasing number of stallholders here sell arts and crafts from New Caledonia and beyond, in a market that has traditionally focused on fresh produce. On a busy day the array of tropical fruit, vegetables, bread, cakes, olives, meat and fish is staggering. The fascinating fish market, set apart from the other buildings, sells seafood of all shapes and sizes, including fish, lobsters, crabs, prawns and squid. A charming little snack bar 'La Buvette du Marche', at the centre of the market, serves coffee, delicious French pastries and is extremely popular with locals and visitors alike. Saturdays and Sundays a group of local musicians playing ukuleles and other string instruments keeps shoppers entertained.



Bonjour!



### ❖ Ways to explore

The Noumea Explorer hop-on hop-off bus is a popular option for visitors and takes you to all Noumea's main attractions.



Another way is by miniature train – Le Petit Train, famous in Noumea, makes a scenic circuit

between Noumea's city centre, bays and city surrounds, stopping at key sights along the way.

honour of Jean-Marie Tjibaou, former leader of the pro-independence movement in New Caledonia, Kanak art, culture and cultural life is its pivotal focus. However it is also a venue for exhibitions of traditional and contemporary Oceanian art, plus world-class dance, theatre and concert performances.

The Territorial Museum houses some superb examples of Melanesian architecture, as well as an excellent collection of utensils and artefacts from all over the Pacific. The City of Noumea Museum, housed in a building dating back to 1864, retraces the history of the city and the country from 1854 to 1954. Or the historic Bernheim Library is a must see for those interested in literature.

# Taste Noumea

Pacific-infused French cuisine is the order of the day in New Caledonia and there are so many ways to experience it.

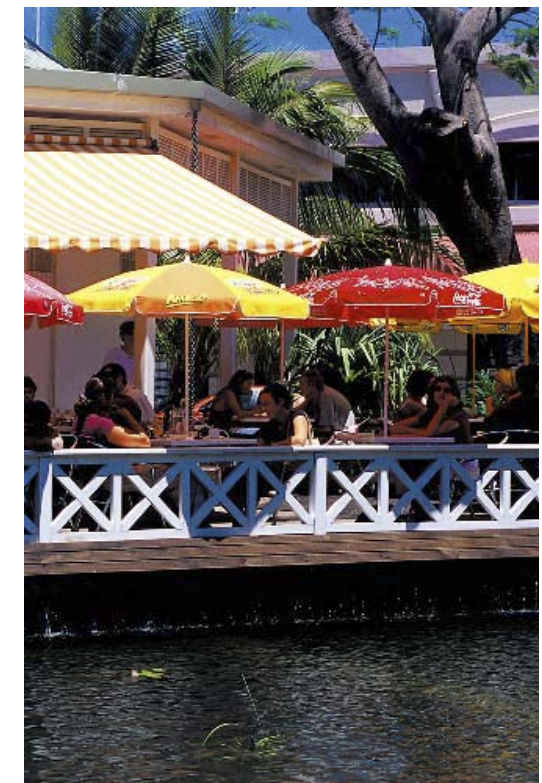
Lay back and enjoy a picnic on a secluded beach, treat yourself to elegant gourmet dinner fanned by gentle trade winds or watch the world pass by from an outdoor café as you enjoy freshly-baked croissants, baguettes and pastries.



In Noumea alone, there are over 150 restaurants catering for all tastes and budgets and as well as French, your international menu includes Italian, Indonesian, Chinese, Vietnamese, Japanese or traditional Melanesian cuisine. Noumea even has a superb revolving restaurant offering fantastic 360 degree views of the city and her bays.

Foodies can take away a slice of France by attending lessons at one of the many cooking schools, which include guided tours of local produce markets. Or there are appreciation tours to take in delicious French foods, wines and gastronomic experiences, including the opportunity to meet with highly qualified chefs and sommeliers.

*bon appétit!*



# Dream New Caledonia

No stress, a relaxed pace and with time of little significance ... that's island life, island time!

Forget your usual ways and the demands of a busy existence, let yourself be part of an unhurried world, surrounded by natural beauty - your stay will be refreshing and memorable.

If you like discovering nature, taking long walks, swimming, snorkelling, diving, meeting local people or simply lying on magnificent, deserted, white sand beaches, then you could easily spend 5 to 10 days here and still find plenty to do.

*Le Paradis!*



## The Isle of Pines (Ile des Pins)

80km south-east of Noumea lies the enchanting Isle of Pines (14 km wide, 18 km long) a place where time seems to stand still in an idyllic setting of white beaches under swaying palms and soaring Araucaria pines. "Kunié", as it is still called by the inhabitants, is as beautiful under water as it is on land and a favourite spot for divers.



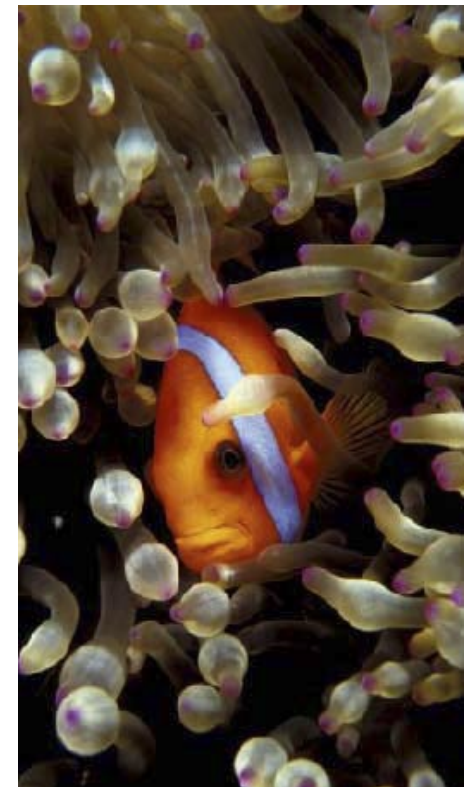
## The Loyalty Islands

Mare, Lifou and Ouvea are roughly a 40 minute flight from Noumea, with several flights each day on Air Caledonie. The Betico motorised catamaran also runs services from Nouméa to Lifou, Maré and Ouvéa several times a week.

**Lifou** - is the largest of the Loyalty Islands, being 1,150 km<sup>2</sup> (larger than Tahiti) and the most populated.

**Ouvea** - This island is a dream destination with its magnificent clear blue sea, white sand beaches and its green parrots which are unique in the world. The west coast of the island boasts the largest beach in the Loyalty Islands - 25 km of uninterrupted white sand surrounded by an emerald lagoon.

**Mare** - Maré Island with its cliffs high above the waves below, seems to be the most secret of the Loyalty Islands. The island has a wild beauty with decidedly jagged basalt rocks, sombre forests and long beaches bordered with coconut palms. Its central plain is scattered with grottos and natural pools where fish and turtles swim.



# Drive New Caledonia

## Fly - Drive Holidays

A great way to experience the real New Caledonia is to drive yourself. You can hire cars, motorcycles, 4WD, even minibuses. The road network is very good and well sign-posted. You drive the European way, on the right side with left hand drive, which is easier than you might think to adapt to, especially in the country where the traffic is lighter than in the city.

It is around 400 km from Noumea up to Poum, at the northern tip of the island. A popular option is to head through the hills over to the east coast and make your way at a leisurely pace up to the far north, then jet back to Noumea via the western plains and farm lands with a stop en route at Kone or Bourail. In the northern province of the country you will come across everything to local French and Melanesian 'broussards' (country folk) to Melanesian tribes and you can be guaranteed a warm welcome. But it's not just the countryside and the people that are exceptional, with lush rainforest on offer for nature-lovers, not to mention the stunningly beautiful with their deserted white sand beaches and soaring granite cliffs.



## 4WD Adventures

Some of the most interesting places in New Caledonia are best seen by 4WD. A wide range of interesting and adventure tours and bush safaris are available from specialised and experienced operators.



*C'est magnifique!*

## ❖ Explore the Culture

The Melanesian tribal visit is a unique experience to discover the customs and way of life of the Melanesian people.

Tribal visits are always friendly affairs. They are possible on the Mainland, the Isle of Pines and the Loyalty Islands, and are usually organised by inbound operators, local guides or the provincial Tourist Offices.

Customary traditions involve a set of rules of respect still in practice throughout the Mainland and on the islands. For those that have the opportunity to visit a tribe it is wise to begin with the “customary exchange” upon arrival. This means showing respect by exchanging gifts with the chief of the tribe in return for his hospitality. Gifts don't have to be of any great value. They can be cigarettes, bank notes or a piece of fabric.



Visit a tribe and try a traditional Melanesian dish called bougna: a mix of either chicken, lobster or fish and vegetables (yam, sweet potatoes, bananas, etc.) in coconut milk, wrapped in banana leaves and cooked in the traditional Melanesian earth oven over hot stones.



## ❖ Getting there

New Caledonia is 2.5 hours flying from Auckland. Both Aircalin and Air New Zealand fly to New Caledonia from Auckland. Four direct flights a week from Auckland - every Tue, Thu, Sat and Sun

## ❖ Airport

Tontouta International Airport is located approx 50km from Nouméa and is connected by a modern road, now including multi-lane freeway sections. Shuttle buses or mini-buses (indicate price: approx XPF2,800pp (NZ\$43) and taxis offer regular transfer services to Nouméa in 50 minutes.

It is recommended to organise bus transfers or hire a car prior to arrival. There is a road toll 150 XPF on the way to the city so those hiring a car should make sure to change some money at the airport to cover this.

## ❖ Weather

New Caledonia boasts a pleasant tropical oceanic climate all year round - neither too hot nor too cold. It is also a sunny country, with Nouméa enjoying 212 sunny days per year. The warm season is SEP-MAR with temperatures averaging between 25-27 deg C. The cooler season is APR-AUG with temperatures averaging 20-23 deg C, however water temperatures remaining warm throughout the year. The wetter months, as in tropical regions, are JAN-MAR.

## ❖ Explore Activities

**4WD Excursions**  
**Abseiling**  
**Aquatic Toboggans**  
**Big Game Fishing**  
**Canoes / Kayaks & Outriggers**  
**Canyoning**  
**Climbing**  
**Fly Fishing, Spinning & Light Trolling**  
**Freediving Training & Aquatic Trip**  
**Glass Bottom Boats**  
**Gliding**  
**Golf**  
**Helicopter Flights**  
**Horseback Excursions**  
**Hunting**  
**Jet Skiing**  
**Kitesurfing**

## ❖ Electricity

New Caledonia has 220 volts AC 50 cycles electricity, which is suitable for NZ 240 volt appliances. The power sockets are the European type, so it is advisable to take an adaptor.

**Learning French**  
**Mountain Biking**  
**Ocean Walk**  
**Paintball**  
**Parachuting**  
**Paragliding & Kiting**  
**Petanque**  
**Roller Skating**  
**Scuba Diving**  
**Squash**  
**Tennis**  
**Treewalking**  
**Trekking**  
**Tribal Visits**  
**Water Skiing & Wakeboarding**  
**Whale Watching & Dolphin Experience**  
**Windsurfing & Surfing**  
**Yachts, Cats & Powerboats**

[www.newcaledonia.co.nz](http://www.newcaledonia.co.nz)



**New Caledonia**  
**Tourism**

TRAVEL  
**Memo**  
SPECIAL FEATURE  
[www.travelmemo.co.nz](http://www.travelmemo.co.nz)

New Caledonia Tourism  
Level 3, General Buildings  
33 Shortland St, Auckland  
Tel: (09) 3075 257

## ❖ FAQs

### Is food and dining expensive?

New Caledonia offers an enormous choice of dining options. There are around 150 restaurants and cafes in Nouméa alone, catering for all tastes and budgets. There is even a McDonalds.

Shop at the modern supermarkets for an inexpensive picnic selection of freshly baked baguettes, quality meats, smallgoods, French cheeses, tropical fruits and other delicacies. Another alternative is the Nouméa market where local produce like coconuts and tropical fruits is sold alongside delicious fresh seafood.

### Is the beer expensive?

No. A wide range of Australian, New Zealand and international beers are available (but they do attract an import tax). To get the best value try the popular local beer 'Number One'. It is excellent quality and costs under \$30 for a 24 x 330ml carton or just \$1.20 a 330ml can in a supermarket. You won't be disappointed.

### Is the wine expensive?

You can buy a bottle of good French white or red wine from a supermarket for under \$10, and a bottle of quality French champagne for around \$50.

### Am I expected to tip?

No, there is no tipping required.

### What currency is used in New Caledonia?

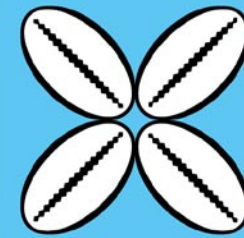
New Caledonia uses the French Pacific Franc (XPF) and the average exchange rate is approx NZ\$1 = 64 XPF (as at May 2010). Foreign currency and traveller's cheques can be exchanged at most hotels and banks. Major international credit cards are accepted, with the exception of Bankcard. ATM machines are readily available and accept NZ Eftpos cards.

### Do people speak English?

French is the national language but most people involved in the tourist industry, as well as many locals, speak English and a majority of tourist brochures are written in English. Of course, a few phrases in French are always welcomed by the locals. You'll find New Caledonians are very friendly.



New Caledonia  
Tourism



Our  
pacific  
Your South Pacific  
Holiday Specialists

Call Our Pacific, your New Caledonia specialist on  
0800 500 598 or visit [www.ourpacific.co.nz/newcal](http://www.ourpacific.co.nz/newcal).